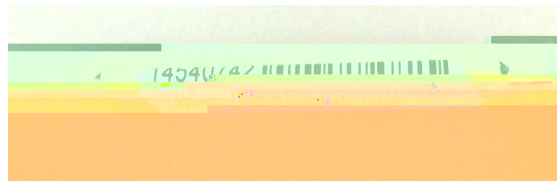


+Tap +WDM



2 980/1550WDM DWG

Telcordia GR-1221-CORE
RoHS

		nm	980/1550
(s)		nm	1528~1569
(p)		nm	965~990
		dB	1.5
		dB	1.6
		dB	0.8
		dB	0.8
Peak to Peak Error Function		dB	0.6
	Signal to Com@ s	dB	21
	Com to Signal@ p	dB	36
	Pump1 to Com@ s	dB	18
	Pump2 to Signal@ s	dB	50

